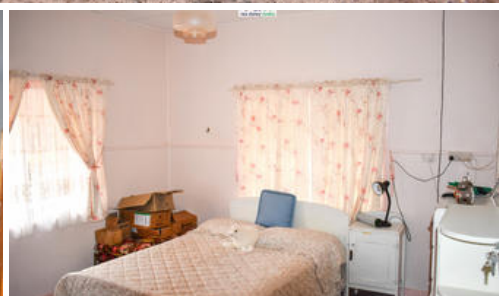


Sold



GROSVENOR

15047 Guyra Rd, Inverell



GROSVENOR

AREA: 42.56 ha (105 ac) Freehold.

Inverell Shire Council Rates. Northern Tablelands LLS.

SITUATION: 12 minutes to Inverell CBD, 6 minutes to Gilgai, 4 minutes to Inverell Airport.

SERVICES: Power. Phone. Primary and Secondary schools at Inverell. Air and rail services from Inverell to Brisbane & Sydney, Armidale/Tamworth/Moree to Sydney. Saleyards at Inverell, being the 6th largest selling centre in the state, weekly fat cattle sales, fortnightly sheep sales and monthly store cattle sales. Export abattoir at Inverell. 3 major feedlots in the Inverell area. Inverell is one of the major shopping and service centres of Northern NSW.

COUNTRY: Undulating to flat. Altitude: 800m – 860m ASL.

SOIL: Red soil.

PASTURE DEVELOPMENT: Approx. 8.9ha (22ac) of open country, with scope to improve with regrowth control.

TIMBER: White Box, Stingy Bark, Wattle.

WATER: 1 dam. 1 unequipped bore. Town water available.

RAINFALL: 803mm (31 inch) p.a.

IMPROVEMENTS: 3 bedroom home with solar power & 15,000 gallon rainwater tank. Kitchen containing gas stove & wood stove. Dining adjoins to

🛏 3 🚿 2 🚗 2

Price SOLD for \$360,000

Property Type residential

Property ID 495

Land Area 42.56 ha

Agent Details

Wally Duff - 0427546146

Office Details

Rex Daley Realty
110 Byron Street Inverell NSW 2360
Australia
02 6722 5500



kitchen & offers wood heater & gas outlet. Second shower located in laundry. Sunroom & enclosed verandahs. High clearance carport. Workshop with power. Garden sheds. Chook pen.

MACHINERY SHED: 2 machinery sheds.

WOOLSHED: Single stand shearing shed.

The above information provided has been furnished to us by the vendor/s. We have not verified whether or not that information is accurate and do not have any belief in one way or the other in its accuracy. We do not accept any responsibility to any person for its accuracy and do no more than pass it on. All interested parties should make and rely upon their own inquiries in order to determine whether or not this information is in fact accurate.