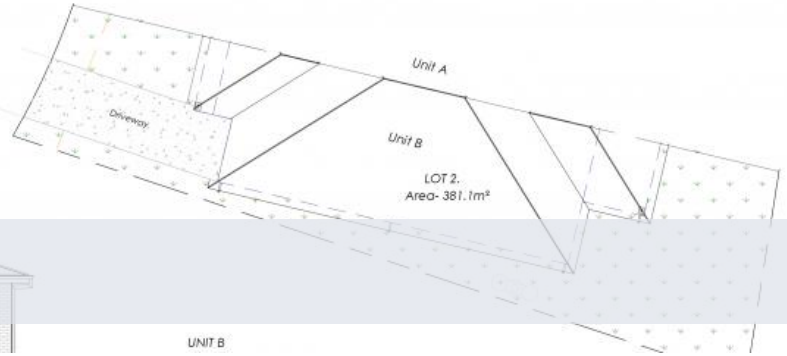


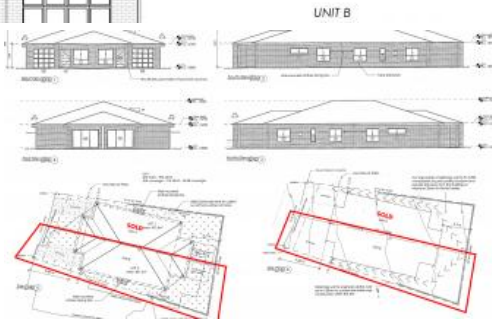
Sold

Area Schedule	
Name	Area
Living	134.75 m ²
Alfresco	14.10 m ²
Garage	25.11 m ²
Patio	6.27 m ²
Grand total	180.23 m ²

Floor Plan 1



Inverell



YOUR BRAND NEW HOME

This brand new, brick home with an open floorplan will tick all the boxes.

Your new home welcomes you with an impressive layout boasting 3 bedrooms, two spacious living areas and a great outdoor entertaining space. With an easy flowing floor plan and generous proportions, there is plenty of space for the whole family.

- Brick construction
- Open plan lounge, kitchen and dining
- Modern kitchen with dishwasher
- Walk-in pantry
- Second living room
- 3 bedrooms with built-in robes
- Ensuite adjoins bedroom 1
- Bathroom has freestanding bathtub, shower, vanity and separate toilet
- Covered alfresco area
- Attached garage with electric roller door
- NBN internet
- Elevated views over town

Unit B for sale. Unit A already sold.

3 bedrooms, 2 bathrooms, 1 car space

Price SOLD
Property Type Residential
Property ID 798

Agent Details

Amanda Green - 0427 211 379

Office Details

RDR Real Estate
24 Otho St Inverell, NSW, 2360
Australia
02 6722 5500

rdr.
real estate

Full list of inclusions available upon request.

This home is located a short distance from schools, Lake Inverell recreation area, the CBD and Inverell Hospital.

Disclaimer: All information contained is gathered from relevant third party sources. We cannot guarantee or give any warranty about the information provided. Interested parties must rely solely on their own enquiries.

The above information provided has been furnished to us by the vendor/s. We have not verified whether or not that information is accurate and do not have any belief in one way or the other in its accuracy. We do not accept any responsibility to any person for its accuracy and do no more than pass it on. All interested parties should make and rely upon their own inquiries in order to determine whether or not this information is in fact accurate.