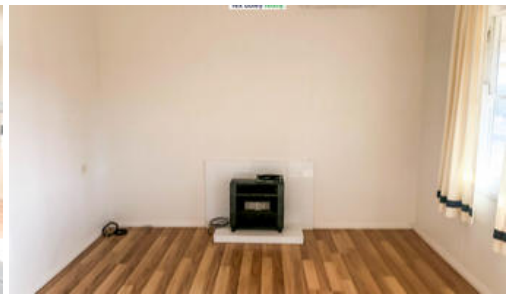
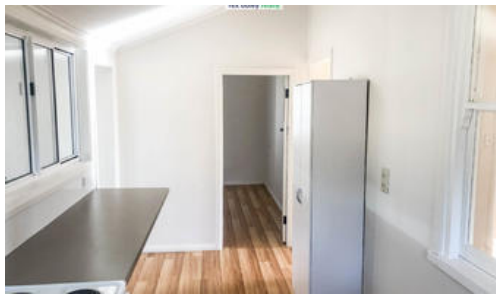
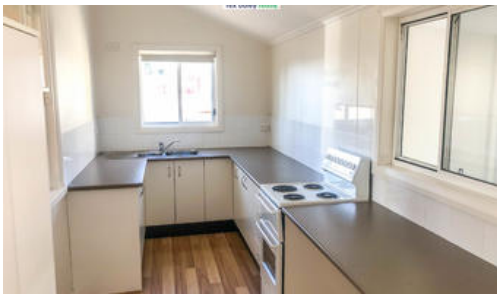


Leased



17 Warialda Road, Coolatai



### COUNTRY COTTAGE FOR RENT

- 3 bedroom cottage has been beautifully renovated with timber-look flooring throughout, while still retaining its original country charm.
- Updated kitchen with electric stove, ample storage and sufficient bench space.
- Spacious lounge with reverse cycle air conditioner and gas bayonet.
- Tiled combined bathroom and laundry with glass shower, laundry tub and toilet.
- Front verandah overlooking your rural views.
- Covered entertainment area at the rear of the home.
- Car parking includes 2 car carport.
- Set on a generous 1717m<sup>2</sup> fully fenced block with garden shed.
- Water from 5,000 litre rainwater tank plus 23,000 litre bore water tank.
- Located in the peaceful village of Coolatai, situated approx. 30 minutes from Ashford, 30 minutes from Warialda & 60 minutes from Inverell.
- NBN internet

\* Photos taken in Drought Conditions \*

🛏 3 🚿 1 🚗 2

<b>Price</b>	\$180 per week
<b>Property Type</b>	rental
<b>Property ID</b>	534
<b>Land Area</b>	1,717 m2

#### Agent Details

Wally Duff - 0427546146

#### Office Details

Rex Daley Realty  
110 Byron Street Inverell NSW 2360  
Australia  
02 6722 5500



The above information provided has been furnished to us by the vendor/s. We have not verified whether or not that information is accurate and do not have any belief in one way or the other in its accuracy. We do not accept any responsibility to any person for its accuracy and do no more than pass it on. All interested parties should make and rely upon their own inquiries in order to determine whether or not this information is in fact accurate.